

iBET Private Not for Profit | Industry Interface | Applied R&D | Biotechnology

Established	: 1989
Activity	: R&D Services
Business Vol.	: 7 M€ (2013)
Infrastructure	: 16 Labs Pilot Plant Analytical Services Unit Mass Spec Unit NMR
Resources	: 110 (18 PhD 63 Researchers 14 Technicians)
Certification	: GLP GMP (INFARMED DGAV)



Types of colaborations:

- ✓ **Contract Research Projects**
- ✓ **“Umbrella Research Contracts”**
- ✓ **Satellite Laboratories**
(eg. Bayer, Merck)
- ✓ **Joint Research for Advanced Training** (eg. MSc and PhD)

Mission

**Creating value for our partners
leveraging scientific & technological
knowledge in Biology and Chemistry**

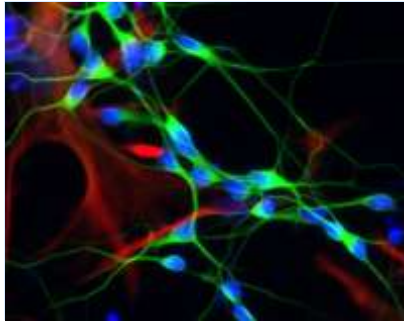
Values

**Ambition, Commitment, Integrity,
Search for Knowledge, Innovation,
Service**

Partners/Clients

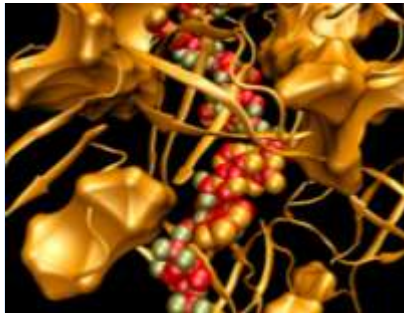


Areas of Intervention | Industry Interface | Applied R&D | Biotechnology



Animal Cell Technology – Biopharmaceuticals and ATMPs

- Recombinant Proteins including Monoclonal Antibodies
- Vaccines (Virus-Like Particles)
- Viral Vectors for Gene Therapy
- Stem Cells Bioprocessing and Cell Therapy
- 3D *in vitro* Cell Models for pre-clinical research (eg. Toxicology)



Structural Biology – Development of New Drugs

- Differential Fluorimetry Assays for protein stability and protein:ligand interaction studies
- “Screening” of Compound Libraries (Drug Candidates)
- 3D protein structure determination by X-ray crystallography and/or NMR
- Support in the Development of New Drug Candidates



Food in Health – Functional Ingredients

- Isolation of Functional Ingredients by Clean Technology
- Formulation of Bioactive Ingredients
- Health Claims: In vitro Chemical and Cell Based Assays for Pre-Clinical studies
- Transport | Permeability | Solubility | Bioavailability Studies (*in vitro*)
- Human intervention studies

Complementarity | Applied R&D | Industry | “Bench to Bedside”



Pilot Plant Unit – Development and Scale-Up

- Bio-Process Development
- Scale-up and Technology Transfer
- Biopharmaceuticals for Pre-Clinical and Clinical Studies (via GenIbet)
- Production scales up to 500 L



Analytical Services Unit – Safety | Quality Control | Lot Release

- cGMP Certification (INFARMED | DGAV)
- Help Desk for Food Quality and Safety (eg. Autenticity, Sensory Analysis)
- Biomolecule Characterization (eg. Mass Spectroscopy)
- Quality Control of Pharmaceuticals and Biopharmaceuticals
- Lot Release of Human Medicinal and Investigational Medicinal Products



GenIbet Biopharmaceuticals (45% iBET)

- CMO – “Contract Manufacturing Organization”
- Production of Biopharmaceuticals for Phase I/II Clinical Trials (eg. Recombinant Proteins, Antibodies, Viruses, DNA...)
- Fill and Finish
- Quality Control and Quality Assurance (via Analytical Services Unit)